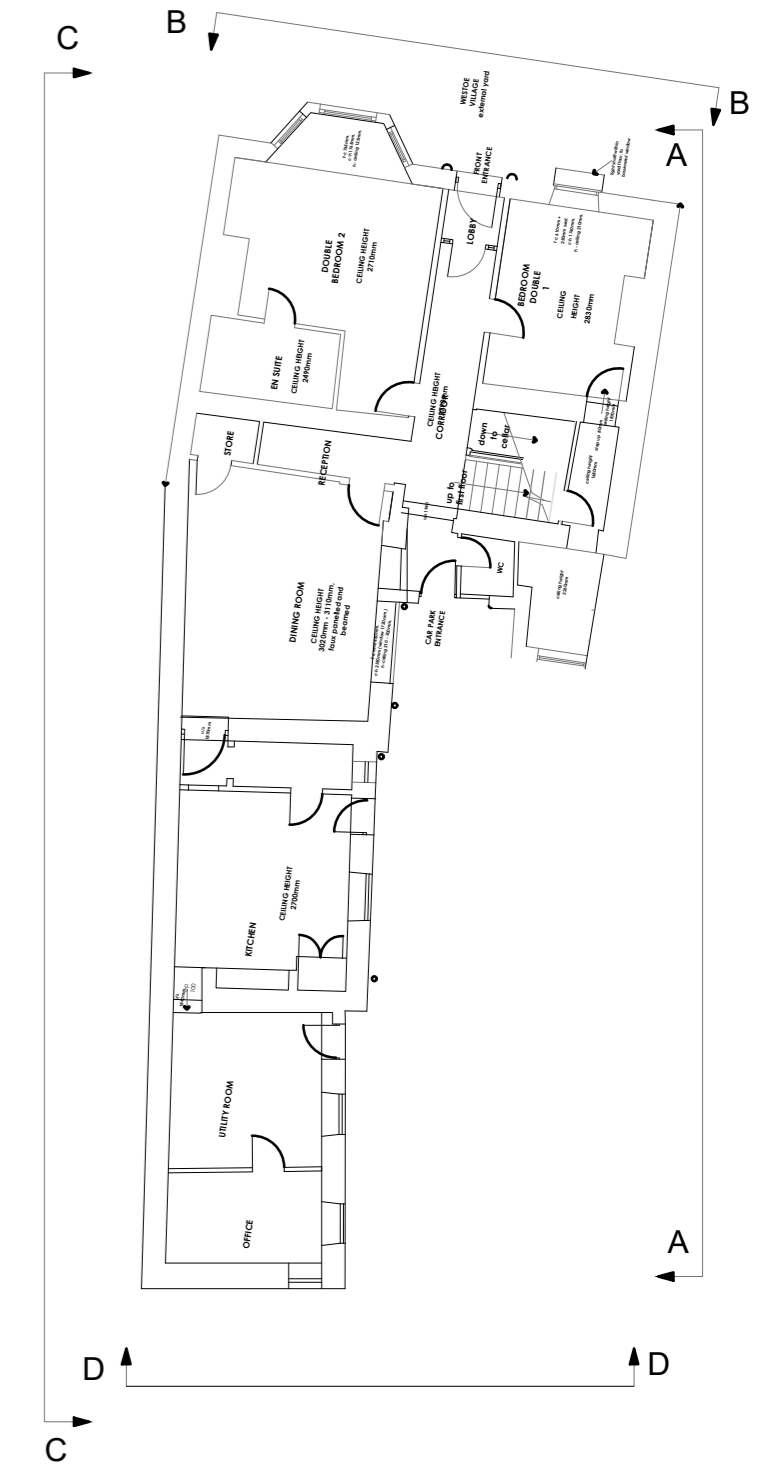


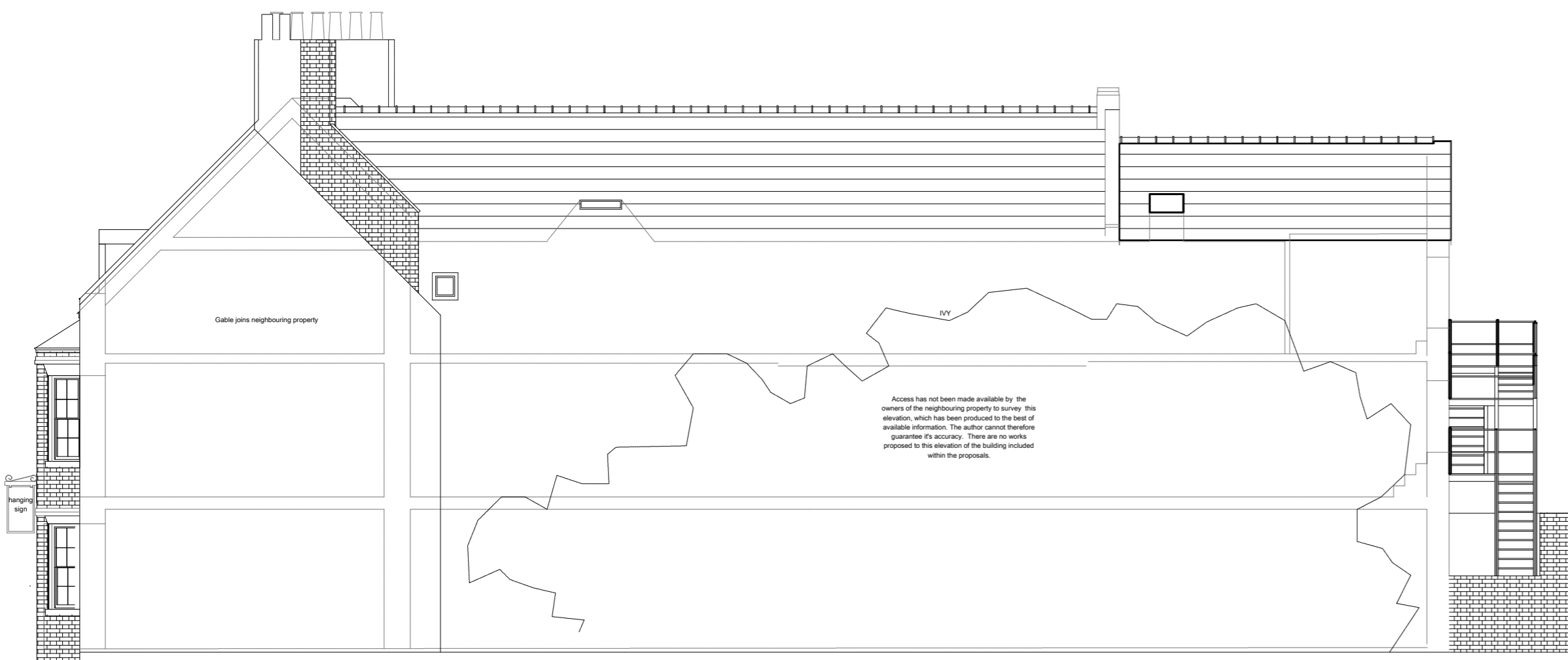
EXISTING ELEVATION A-A



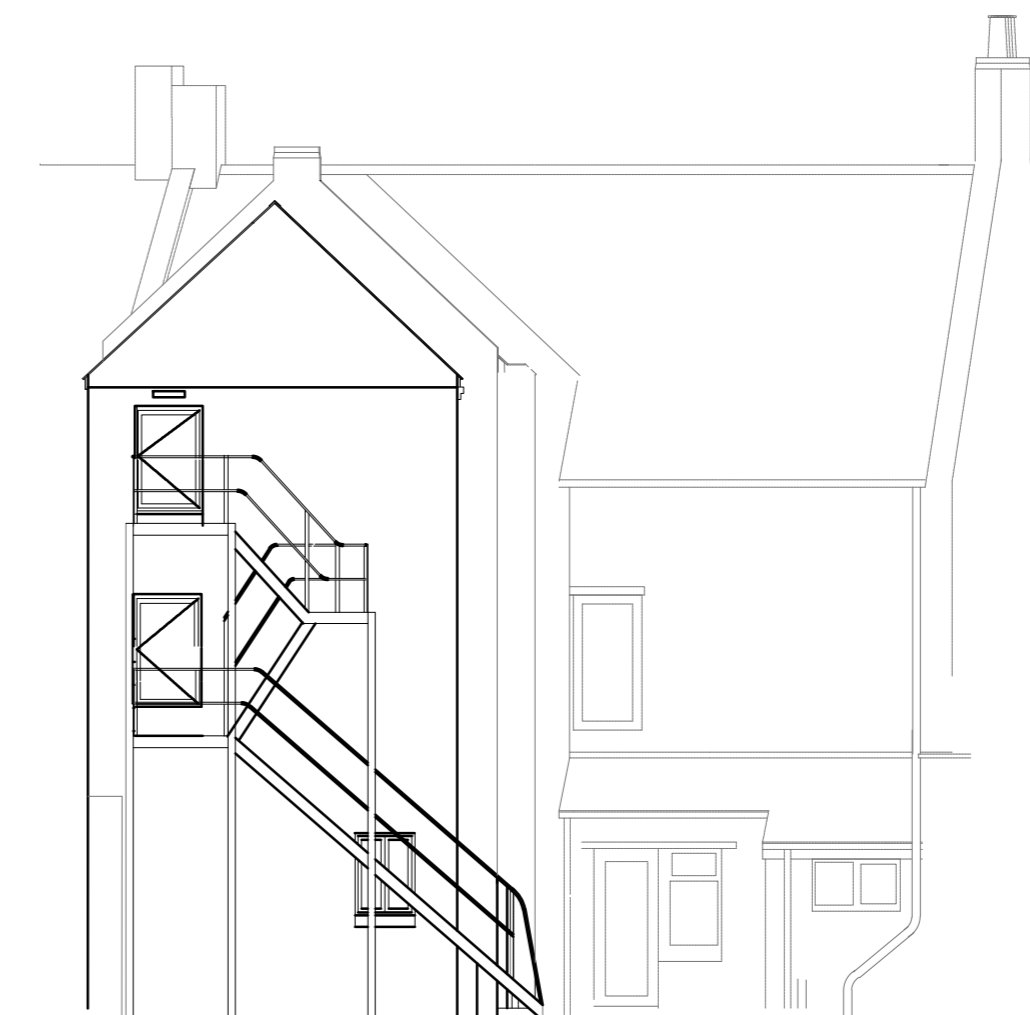
EXISTING ELEVATION B-B



Subsity	Revision	Date	Drawn By	Checked By
S4	P01.02	10.11.20	MW	DB
EXISTING ELEVATION B-B UPDATED				
Subsity	Revision	Date	Drawn By	Checked By
S4	P01.01	01.11.19	ME	DB
ELEVATIONS UPDATED TO SHOW RWP AND SVP TO ELEVATIONS				
Subsity	Revision	Date	Drawn By	Checked By
[S4]	[P01]	19.08.19	GS	DB
1. FIRST ISSUE FOR PLANNING				



EXISTING ELEVATION C-C



EXISTING ELEVATION D-D

Revision

BLAKE HOPKINSON ARCHITECTURE + DESIGN

BLAKE HOPKINSON ARCHITECTURE LLP 0C327403
NORTH SHIELDS, TYNE + WEAR - 0191 2570022 - www.bharchitecture.co.uk

BHA Project No:
RES736

Project Name:
**SIR WILLIAM FOX HOTEL
5 WESTOE VILLAGE
SOUTH SHIELDS**

Drawing Title:
EXISTING ELEVATIONS

Model File Name: RES736-BHA-00-ZZ-M2-A-0500

Drawn By: GS	Date Drawn: 15/08/19
Checked By: DB	Date Checked: 19/08/19
Scale at A2: 1:100	Suitability: S4 Revision: P01.02

File Name:
RES736-BHA-00-ZZ-DR-A-0560

© Blake Hopkinson Architecture L.L.P.